

**A BAYESIAN BENEFIT-COST ANALYSIS OF AN EXPERIMENTAL
FERTILIZATION PROJECT FOR SOCKEYE SALMON
(*Oncorhynchus nerka*) IN CHILKO LAKE, BRITISH COLUMBIA**

by

Marla Rae Maxwell

B.Sc. Zoology, University of Calgary 1993

B.Sc. Ecology, University of Calgary 1996

RESEARCH PROJECT SUBMITTED IN PARTIAL FULFILLMENT OF THE
REQUIREMENT FOR THE DEGREE OF
MASTER OF RESOURCE MANAGEMENT

in the

School of Resource and Environmental Management

Project No. 256

© Marla Rae Maxwell 2000

SIMON FRASER UNIVERSITY

May, 2000

All rights reserved. This work may not be reproduced in whole or in part, by
photocopy or other means, without permission of the author.

Approval

Name: Marla Rae Maxwell

Degree: Master of Resource Management

Project No.: 256

Title of Research Project: A Bayesian benefit-cost analysis of an experimental fertilization project for sockeye salmon (*Oncorhynchus nerka*) in Chilko Lake, British Columbia

Supervisory Committee:

Abstract

Lake fertilization has been used for decades by fisheries management agencies to enhance Pacific salmon productivity. However, few studies have examined how many additional adult recruits are made available to the fishery through lake fertilization projects, and in particular, how much the harvest from these additional recruits is worth. Estimating the economic value resulting directly from fertilization is necessary to evaluate the project's economic efficiency, which allows fisheries managers to assess the economic merits of fertilization relative to other enhancement projects. To address this issue, I developed and applied a framework for estimating the changes in economic value of a sockeye salmon stock following lake fertilization, using data from the Chilko Lake fertilization project. I used Bayesian statistics and various modifications to the Ricker model to take into account uncertainties in the shape of the stock-recruitment relationship, and the effect of fertilization on that relationship. Two of the models used incorporated a time series of average annual productivity data from other Fraser River stocks (the Fraser Index), to account for environmental variation common to all stocks in this river system. Results indicated a strong probability that lake fertilization had increased the number of

*To Marg and Free,
whose love, patience, and financial subsidies
were integral to the completion of this little blue book.*

Acknowledgments

I thank my supervisory committee, Randall Peterman, Michael Bradford, and Mark Jaccard for their advice and expertise. I would also like to thank the members of the Fisheries Research Group for providing much help and many suggestions in the development of this project. In particular, I owe thanks to Brian Pyper, who shared a wealth of knowledge and research experience, and Josephine Osborne, who provided abundant support and understanding.

For providing data and technical support, I thank Mike Lapointe (Pacific Salmon Commission), and Al Cass, Erland MacIsaac, Ken Shortreed, Chris Sporer, and Greg Steer

Table of Contents

Approval.....	ii
Abstract.....	iii
Dedication	iv
Acknowledgments.....	v
Table of Contents	vi
List of Tables	viii
List of Figures.....	ix
Introduction	1
f.....	ix

Discussion	25
Differences among models	26
<i>Density-independent vs. density-dependent models</i>	26
<i>Fraser Index</i>	28
<i>Implications of the differences among models</i>	30
Fertilization status of the 1987 brood year	32
Prior probability distributions	33
Management implications	36
References	39
Appendix A.....	65
SIR Algorithm.....	65
Appendix B.....	67
Costs and benefits	67
Appendix C.....	68
Canadian Consumer Price Index.....	68

List of Tables

Table 1. Upper and lower bounds of baseline <u>prior</u> probability distributions for model parameters, and 95% credibility intervals of marginal <u>posterior</u> distributions of model parameters	45
A) 1987 fertilized	45
B) 1987 unfertilized.....	46
Table 2. Expected economic performance measures over the entire 5 years of Chilko Lake fertilization, using 10% discount rate	47
Table 3. Relative values of the modified Akaike's Information Criterion.....	48
Table 4. Upper and lower bounds of narrow (± 1 SE) <u>prior</u> probability distributions for model parameters, and 95% credibility intervals of marginal <u>posterior</u> distributions of model parameters.....	49
A) 1987 fertilized	49
B) 1987 unfertilized.....	50
Table 5. Best-fit estimates of model parameters	51
Table 6. Estimates of additional recruits produced over the entire 5 years of Chilko Lake fertilization using the best-fit estimates of model parameters, and estimates of expected additional recruits that would result from hypothetical repeated experiments summed over the entire 5 years of Chilko Lake fertilization using baseline and narrow (± 1 SE) <u>prior</u> probability distributions for model parameters.	52
Table 7. Direct costs of the Chilko Lake fertilization project	67
Table 8. Assumed net commercial benefits from the Chilko Lake fertilization project	67
Table 9. Components of net commercial benefits for net and troll fisheries	67
Table 10. Canadian Consumer Price Index for all economic sectors.....	68

List of Figures

Figure 1. Stock-recruitment data for Chilko Lake sockeye.....	53
Figure 2. Generalized flow chart of the procedure used to estimate the economic value of the Chilko Lake fertilization project.	55
Figure 3. Estimates of estimates of expected additional recruits that would result from hypothetical repeated experiments summed over the entire 5 years of the Chilko Lake fertilization project.....	57
Figure 4. Probability distributions of additional recruits that would result from hypothetical repeated experiments summed over the entire 5 years of the Chilko Lake fertilization project.....	59
Figure 5. Probability distributions of benefit-cost ratio that would result from hypothetical repeated experiments summed over the entire 5 years of the Chilko Lake fertilization project.....	61
Figure 6. Probability distributions of net present value (NPV) that would result from hypothetical repeated experiments summed over the entire 5 years of the Chilko Lake fertilization project.....	63

Introduction

In recent decades, fertilization has become a popular enhancement technique for lakes and streams throughout British Columbia (BC) and Alaska (Hilborn and Winton

sustainable harvest level and economic value (LeBrasseur et al. 1978; LeBrasseur et al. 1979; Hyatt and Stockner 1985; Kyle 1994b).

Managers in the Canada Department of Fisheries and Oceans (DFO) are interested in estimating the magnitude of change in economic value for fertilized stocks, in part because they are required to evaluate the economic efficiency (e.g. benefit-cost ratio) of all enhancement projects (G. Steer, Department of Fisheries and Oceans, Vancouver, B.C., personal communication; Hilborn and Winton 1993; Pearse 1994). However, due to variability in stock-recruitment data and the short duration of most

will not necessarily translate into the same increase in survival rate to adult recruitment. This can occur because density-dependent survival rates can exist in the marine life stage, in addition to the freshwater life stage, thereby compensating for increases in juvenile abundance (reviewed by Peterman 1991). Ignoring this effect can produce overly optimistic forecasts of the benefits of enhancement by exaggerating estimates of adult recruits that will be produced (Peterman 1991).

In the specific context of lake fertilization, it is therefore critical to examine whether fertilization increases survival rates over the entire life of a salmon, rather than assuming that increases seen in the juvenile life stage will persist through to adult recruitment. To my knowledge, only two studies have attempted to measure this effect. First, LeBrasseur et al. (1978) found that the average number of sockeye salmon recruits per spawner to Great Central Lake, British Columbia, was four times greater in fertilized than unfertilized years, while the recruits per spawner to the adjacent, unfertilized Sproat Lake increased only two-fold over the same period. Unfortunately, the observed changes in recruits per spawner were calculated using only two pre-fertilization brood years and three fertilized broods. Although the selected pre- and post-fertilization years did have similar spawner abundances, the limited years of data in this analysis restrict inferences that can be made concerning the contribution of fertilization to this change in recruits per spawner relative to other potential sources.

Recently, in a more comprehensive study, Bradford et al. (in press) examined changes in pre- and post-fertilization productivity estimates for the Chilko Lake sockeye stock. The authors accounted for the effect of variable spawner abundance by fitting a modified Ricker stock-recruitment model. Their analysis also incorporated a time series of average annual productivity data from other Fraser River sockeye stocks, which was

included to account for environmental variation common to all stocks in this river system. Results showed that best-fit estimates of the Ricker ‘a’ parameter increased in fertilized years, indicating that fertilization had a positive effect on the number of adult recruits produced per spawner at a given spawner abundance. However, variability of data around the stock-recruitment relationship created considerable uncertainty in the magnitude of this increase.

For any sockeye stock, the natural variability and measurement error inherent in stock-recruitment data make it impossible for researchers to determine the shape of the “true” underlying stock-recruitment relationship, assuming that such a relationship exists. It is therefore insufficient to simply use changes in “best-fit” parameters of stock-recruitment relationships to estimate changes in productivity in fertilized years, because there is some non-zero probability that the “true” relationship is described by a set of parameters other than the best-fit values. If models described by the best-fit parameters do not reflect reality, the results they yield may lead to erroneous management decisions. In the case of lake fertilization, the use of inappropriate models could lead to inaccurate estimates of the effect of fertilization on stock productivity. This, in turn, may result in either over-spending on fertilization projects that do not provide a sufficient return on investment, or under-spending on cost-effective fertilization projects and instead investing in less economically efficient enhancement measures.

Uncertainty and measurement error are also pervasive in estimates of economic parameters in benefit-cost analyses. Most introductory textbooks in this area discuss the importance of accounting for uncertainty in inputs to an analysis, including the discount rate, shadow prices (i.e. corrections made to market prices if that price does not accurately reflect a commodity’s true value to society), and the project lifespan (Hanley

and Spash 1993; Brent 1996; Zerbe and Dively 1994). It is usually advocated that uncertainty be taken into account either through sensitivity analyses on uncertain parameters, or through assigning probabilities to uncertain events, and calculating expected (weighted average) values of the project outcome. To more accurately reflect the benefit to society of a particular project, it is often recommended to use expected utilities as performance measures, rather than expected dollar values, to reflect the diminishing marginal utility of increasing income to society (Abelson 1996; Brent 1996).

Despite this recognition and understanding of the need to account for uncertainty, the economic literature contains few case-studies of such an approach applied to benefit-cost analysis. Nonetheless, the limited examples available display a range of methods for dealing with uncertainty, including sensitivity analyses (Anderson et al. 1993), Bayesian decision theory (Costello et al. 1998), analytical generation of a probability distribution of benefit-cost ratios (Goicoechea et al 1982) and the assignment of probabilities to a small number of values for one input parameter (Raffiee et al 1997). However, only one of these studies estimated both benefits and costs of a project (Goicoechea et al 1982), while the others focussed either on the benefit or the cost component of the analysis. The current literature focuses instead on methodologies, as reflected by the abundant literature on how to account for uncertainty in welfare measures (i.e. indicators of net benefits to society generated by a policy or project) (Graham-Tomas 1995; Smith 1987; Ready 1995; Freeman 1993), and in non-market valuation (Ekstrand and Loomis 1998). There is also considerable research devoted to the methods for assessing how various welfare measures (Reed and Ye 1994; Graham 1981) and uncertainty in parameters (Andersen 1982; Bockstael and Opaluch 1983; Anderson 1986) would affect government policies under particular conditions.

Therefore, the purpose of my research was to develop a framework that takes uncertainty into account while estimating the effect of lake fertilization on productivity of adult sockeye salmon. This framework explicitly accounts for uncertainty in the shape of the stock-recruitment relationship by using Bayesian statistics, which assign a probability of occurrence to various possible parameter combinations for a stock-recruitment model (Ianelli and Heifetz 1995; Robb and Peterman 1998). I applied this approach using data from Chilko Lake, a large sockeye-rearing lake in the Fraser River basin that was the site of a DFO experimental fertilization program in the early 1990s. The results of this research will be reported in terms of probability distributions for numbers of additional recruits, benefit-cost ratio, and net present value (NPV) produced from this project, to reflect both the biological and economic impacts of lake fertilization and uncertainties in them.

Finally, I emphasize that the purpose of this study is *not* to make general recommendations on the effectiveness of fertilization as an enhancement technique, but rather to illustrate a specific quantitative framework for evaluating net benefits of lake fertilization. The following analysis of the Chilko Lake fertilization project is merely an example of applying this framework. While the Bayesian approach used here should be useful for evaluating other enhancement projects, results from this experiment should not be considered representative of future fertilization projects, either at Chilko Lake or in other systems. The findings of this study represent only one sample of a range of outcomes that depend on highly variable factors, such as spawner abundance and ocean survival rates in the particular years covered. Furthermore, managers must take into account broader issues when assessing the value of fertilization projects, recognizing the

varied and potentially conflicting objectives of numerous stakeholders that may be affected by enhancement measures.

Methods

Study area and data sources

Chilko Lake

Chilko Lake (70 km long, 200 km²) is home to one of the largest sockeye populations in the Fraser River watershed. It is located within Ts'yl-os Provincial Park, on the eastern side of the Coast Mountain range in British Columbia. Chilko Lake is drained at the north end by the Chilko River, which flows east into the Fraser River. Migrating sockeye travel 180 km along the Chilko River to its confluence with the Fraser, and then 350 km to the ocean.

Chilko Lake was fertilized by the DFO for the last six weeks of summer in 1988, and for twelve weeks through each summer from 1990 through 1993. Fertilizer was applied weekly at a rate of 4 mg P m⁻² wk⁻¹, at a N:P ratio of 25:1. This rate was decreased somewhat in 1993 (Stockner and Shortreed 1994).

Data sources

I used spawner-recruit data for Chilko Lake for 1949 through 1992 brood years (Fig. 1) (Al Cass, Department of Fisheries and Oceans, Nanaimo, B.C., personal communication). Because most juveniles from this stock spend only one winter in freshwater, I included only these sub-2 age-classes (that migrated to sea in their second year) in the recruit data. Historically, sub-2 recruits represent 94% of total returns for 1949 through 1992 brood years, and 98% of total returns for the fertilized broods. I used

effective female spawners (EFS) rather than total spawners because this measure takes into account the retention of some portion of eggs (Al Cass, personal communication). Harvest rates on the Chilko Lake stock for calendar years in which fertilized broods returned were calculated using the spawner-recruit data (1991, 76%; 1992, 85%; 1993, 80%; 1994, 82%; 1995, 56%; 1996, 52%; 1997, 74%). Average weights for age 4₂ and 5₂ sockeye were estimated from Chilko body length data for 1988 through 1992 brood years (Mike Lapointe, Pacific Salmon Commission, Vancouver, B.C., personal communication). All fertilization costs were provided by Erland MacIsaac (Department of Fisheries and Oceans, Burnaby, B.C., personal communication), and commercial benefits for net, troll, and First Nations sockeye fisheries were supplied by Chris Sporer (Department of Fisheries and Oceans, Vancouver, B.C., personal communication). The time series of average productivities for Fraser River stocks (the “Fraser Index”) was provided by Michael Bradford (Department of Fisheries and Oceans, Burnaby, B.C., personal communication).

Estimating the effect of fertilization on sockeye productivity

General description of the procedure

To estimate the effect of fertilization on Chilko Lake sockeye productivity in a Bayesian framework, I calculated the number of additional recruits produced due to fertilization for a large number of hypothesized shapes of a modified Ricker stock-recruitment relationship. Each hypothesized shape and associated change in the number of recruits produced was assigned a probability of occurrence, according to Bayes’ formula (see “Evaluating Bayesian posterior probabilities,” below), to produce a distribution describing the probability that the fertilization project generated a particular

number of additional recruits. To account for various assumptions of how fertilization affected the Ricker relationship, I investigated four different modifications to the Ricker model. A generalized flow chart of this procedure is shown in Figure 2, and the details are described below.

Briefly, the sequence of steps was: (1) A single set of parameter values (θ_i) for a hypothesized stock-recruitment relationship was randomly selected from a joint uniform prior distribution of modified Ricker model parameters. Using Bayes' theorem (Box and Tiao 1973) and historical data on Chilko Lake sockeye spawners and recruits, I calculated the posterior probability (or relative degree of belief) for this parameter set. (2) I then estimated, using this θ_i , the additional recruits and the economic benefits (the value of additional harvest) generated by one year of fertilization, for each year in which fertilization occurred (e.g. 1988 and 1990 through 1993). The yearly economic benefits were discounted to the first year that fertilization took place (i.e. 1988). (3) I then summed the additional recruits and discounted benefits resulting from each year of fertilization over all fertilized years to yield the total additional recruits and the total discounted benefits generated by the project. (4) The yearly fertilization costs were discounted to 1988 (the first year of the project) and summed to yield the total discounted costs of the project. (5) The project's benefit-cost ratio was calculated along with NPV. Steps 1 through 5 were then repeated until a sufficient number of parameter sets had been sampled to produce a stable probability distribution for the number of additional recruits produced due to fertilization. (6) The expected (weighted average) values for benefit-cost ratio, NPV, and total additional recruits from the project were calculated by integrating across all possible parameter sets (θ_i) for a given stock-recruitment model. I then repeated this procedure for each of the four models investigated.

Modeling the effect of fertilization on the stock-recruitment relationship

For all calculations, the Ricker stock-recruitment model was the “core” model used to describe the spawner-recruit relationship:

$$(1) \quad R = S \cdot e^{a - bS + v}$$

where S is the abundance of spawners, R is the number of recruits produced by S spawners, and v is the stochastic error term. The error term was assumed to be normally distributed with standard deviation σ , which reflects the multiplicative, log-normal error structure common in salmon recruitment data (Peterman 1978). Equation 1 can also be expressed as a linear, normal error model:

$$(2) \quad \log_e (R/S) = a - bS + v.$$

The effect of fertilization on the above relationship was modeled as a shift in productivity, in which, for a given spawner abundance, the expected $\log_e (R/S)$ was different for fertilized brood years than for unfertilized broods. However, uncertainty concerning the mechanism by which this shift occurs necessitated the use of four models to take all reasonable potential effects into account. In the first model (herein referred to as the Density-Independent or DI model), I assumed that fertilization changed $\log_e (R/S)$ by the same amount, independent of spawner abundance:

$$(3) \quad \log_e (R/S) = a - bS + cF + v$$

where c is the shift in productivity (i.e. the incremental change in $\log_e (R/S)$) for brood years that were fertilized, and F is a dummy variable equal to 1 for fertilized brood years and 0 for unfertilized brood years.

In the second model (the Density-Dependent or DD model), I assumed that spawner abundance could affect the magnitude and direction of change of $\log_e (R/S)$

caused by fertilization. This could happen, for example, if the number of juveniles produced at low spawner abundance was insufficient to graze down the forage base within the unfertilized lake. If this occurred, fertilization would only increase $\log_e (R/S)$ at high spawner densities. This effect is represented by:

$$(4) \quad \log_e (R/S) = a - (b + dF)S + cF + v$$

where d is the incremental change in the slope of the relationship for brood years affected by fertilization. In this model, the shift in productivity in fertilized years is represented by $dS + c$.

Variability in environmental conditions should also be considered when estimating the effects of nutrient treatment on stock productivity. During the Chilko Lake fertilization, it is possible that there were coincident shifts in environmental factors such as ocean productivity that could affect marine survival rate of smolts, thereby masking or exaggerating the true impact of fertilization. To help control for this potential source of variation, I incorporated the 'Fraser Index' into Equations 3 and 4. This index is a time-series of annual average residuals in $\log_e (R/S)$ from their expected values (based on their best-fit Ricker models) for each of seven other major Fraser River sockeye populations, as reported by Bradford et al (in press):

(DDFI) models, respectively. Note that all variables (i.e. R , S , F , and FI) in Equations 1 through 6 are implicitly subscripted by brood year.

Comparing candidate models

The use of four candidate models to describe the effect of fertilization on the underlying stock-recruitment relationship for Chilko Lake sockeye provided me with the opportunity to formally compare these models, and to identify the model that best approximates the information available in the stock-recruitment data. To accomplish this, I used a modification of Akaike's Information Criterion (AIC) for small sample sizes (AIC_C). The AIC model selection approach is based on information theory, and provides an estimate of the relative Kullback-Liebler (K-L) distance between a candidate model and reality (Burnham and Anderson 1989). The best approximating model of a group of candidate models is identified as the model with the smallest relative K-L distance, and consequently the smallest AIC value. The AIC for a particular model is calculated using the following equation:

(7)

$$(9) \quad \hat{\sigma}^2 = \frac{\sum d_k^2}{n}$$

where d_k is the deviation between the observed and estimated value of $\log_e (R/S)$ for data point k using $\hat{\theta}$ for a particular model.

In cases where the ratio n/K is small (< 40), the AIC may perform poorly, and Burnham and Anderson (1998) advocate the use of a modified AIC, the AIC_C (Hurvich and Tsai 1989), which includes a bias-correction term:

$$(10) \quad AIC_C = n \log_e (\hat{\sigma}^2) + 2K \left(\frac{n}{n-K-1} \right)$$

Because the AIC_C is a measure of the relative performance of a model, it is the differences between AIC_C values calculated for different models, rather than the absolute AIC_C value for a particular model, that is of interest. For this reason, AIC_C values are typically reported as the difference between the AIC_C value for a particular model m , and the lowest AIC_C value calculated from the set of candidate models

the degree of belief that one specific set of parameters described the stock-recruitment relationship, given the observed data. Each parameter set (θ_i , i.e. a , b , c , d , e , and σ

The joint likelihood of the entire data set of k points, D , for a given θ_i was then determined by exponentiating the sum of the $\log_e L_k$ values according to Equation 10:

$$(15) \quad L(D|\theta_i) = \exp\left(\sum_k \log_e L_k\right)$$

I used uniform distributions to describe the prior probabilities of stock-recruitment parameters for all calculations. This means that for any parameter, all reasonable values of that parameter were assigned an equal probability of occurrence. As a result, all parameter sets θ_i used in the calculation of posterior probabilities were initially equally probable. By using uniform prior distributions, the posterior probability of θ_i is determined primarily by the stock-recruitment data, D .

probabilities. The grid search approach would require calculating posteriors for each possible set of parameter values (θ_i) in the model. Even if only twenty values were evaluated for each parameter, this would involve 20^6 , or 64 million, calculations for certain models. I thus instead used a less time consuming sampling approach, a sampling-importance-resampling (SIR) algorithm (Rubin 1988; Smith 1991). The SIR algorithm estimates the posterior probability distribution function by drawing a sample from the posterior using Monte Carlo methods (see Appendix A for details). It has been used in previous fisheries analyses to reduce the computational demands of complex, multi-parameter models (McAllister et al. 1994; Kinas 1996).

Estimating benefits and costs

Benefits

Benefits from the fertilization of Chilko Lake were evaluated as both total number of additional recruits produced by the fertilization project, as well as total economic value of additional recruits harvested in commercial or First Nations fisheries. I estimated the number of additional recruits produced by each fertilized calendar year y (where $y = t + 1$ and t is the year of spawning) for a given parameter set θ_i , by calculating the number of recruits produced both with fertilization ($F = 1$), and without fertilization ($F = 0$) given the observed spawner abundance, S_t . I then took the difference between these values to estimate the additional number of recruits produced due to fertilization for that particular θ_i and S_t . For example, in the Density-Independent model (Equation 3), I used the following equations:

$$(16) \quad \text{Number of recruits with fertilization in year } y = S_t \cdot e^{(a + bS_t + c)}$$

$$(17) \quad \text{Number of recruits without fertilization in year } y = S_t \cdot e^{(a + bS_t)}$$

where S_t is the abundance of spawners that produced the juveniles affected by fertilization in year y (e.g. the females that spawned in 1989 produced the brood class that was affected by fertilization in the summer of 1990). Because 94% of all juveniles spend only one summer in Chilko Lake, I therefore assumed that juveniles were only exposed to fertilization for one year. Subtracting Equation 12 from 11 then gave:

$$(18) \quad \text{Additional recruits due to fertilization in year } y = (S_t \cdot e^{(a + bS_t)})(e^c - 1)$$

The estimated additional recruits produced by one year of fertilization were then used to evaluate the resulting increase in harvest. To do this, the number of additional recruits from brood year t (which were exposed to fertilization in year y) were apportioned among return years according to the observed proportional age distribution for that brood year. The recruits were then harvested according to the observed harvest rate in their return year. For example, if using a particular model and set of parameter values, θ_t , I calculated that there were 100,000 additional recruits from brood year 1989 produced by the fertilization in 1990, 97% would return in 1993 and be harvested at a rate of 80% (the harvest rate observed in the 1993 fishery), and 3% would return in 1994 and be harvested at a rate of 82% (the harvest rate observed in the 1994 fishery). It was assumed that harvesting was not age- or size-selective; therefore the proportion of each age class represented in the harvest was identical to that observed in adult returns.

The number of harvested fish was then translated into dollars based on an estimate of the average value per sockeye harvested from the Chilko stock. The estimate of \$5.50 per kilogram (in 1997 dollars) was calculated using a weighted average of the values of net commercial benefits received from the net, troll, and First Nations fisheries (Appendix B), assuming that the majority of fish harvested from this stock were caught in the net fishery (estimates of the proportion of the Chilko Lake sockeye stock caught by

each fishery were unavailable). Assumed net benefits received in the First Nations fishery

Economic performance measures

I examined the project's benefit-cost ratio and net present value (NPV) to determine whether fertilization was a cost-effective method of increasing sockeye production. For each θ_i , I calculated the benefit-cost ratio by taking the ratio of discounted commercial net benefits to discounted costs of the fertilization project, and I calculated the NPV by subtracting the project's discounted costs from discounted commercial net benefits. Each benefit-cost ratio and NPV was then multiplied by the posterior probability associated with the particular parameter set, θ_i , and summed over all θ_i to yield expected, or weighted average, values for the project's benefit-cost ratio and NPV.

density-dependent term (DD and DDFI) yielded lower estimates than the other two models.

These expected values of additional recruits were calculated from their probability

the right of the break-even point (equal to one for the benefit-cost ratio, and zero for NPV) and only a small portion lying to the left. As well, the portion of the distribution below the break-even point was greater for models that incorporated the density-dependent term (DD and DDFI).

Comparison of models

Results from the model comparison using AIC_c (Table 3) show that models that incorporate the Fraser Index have much lower ΔAIC_c values (DIFI, 0.0; DDFI, 0.92) than equivalent models that did not include this index (DI, 7.48; DD, 5.67), assuming the 1987 brood year benefited from fertilization. Burnham and Anderson (1998) state that differences in AIC of greater than about 4 indicate quite different explanatory power of the models. This means that the DIFI and DDFI models are the best approximating models of those considered in this analysis, and that incorporating the Fraser Index substantially improves the fit of both the DD and DI models to the data. In contrast, incorporating the density-dependent term improves model fit only slightly, and only if the Fraser Index is not already included in the model (Table 3).

Sensitivity analyses

Chilko Lake was only fertilized for half as long (six weeks) in 1988 as in following fertilized years, which created uncertainty about whether the 1987 brood year should be treated as fertilized or unfertilized in my analysis. Accordingly, I examined the sensitivity of my results to the fertilization status of the 1987 brood year. When this brood year was considered *unfertilized*, the values of all performance measures (i.e. the expected number of additional recruits, benefit-cost ratio, and NPV summed over the four years that were considered fertilized, but still discounted back to 1988, the first year of

the project) decreased by between 30 and 70 percent compared to the above results, in which 1987 was considered a fertilized brood (Table 2A, Fig. 3A). Models that incorporated the density-dependent term (DD and DDFI) were more sensitive to changes in the fertilization status of the 1987 brood year than models that did not include this term.

However, changing the fertilization status of this brood year did not affect the overall conclusion about the fertilization project. Regardless of the model used, results suggest that hypothetical repeated fertilization projects would generate additional recruits and a net economic benefit, on average. Furthermore, assumptions about the fertilization status of the 1987 brood year had no effect on the ranking of models according to the AIC model selection approach, and had little effect on the AIC_C differences among models (Table 3).

Further analyses were performed to test the sensitivity of the results to changes in the baseline discount rate of 10%, using 0, 5, and 15% discount rates. As expected, increasing the discount rate from the baseline 10% to 15% resulted in decreases in the baseline benefit-cost ratio and NPV of up to 20%. When no discount rate was applied, benefit-cost ratio and NPV increased by up to 60% from the baseline case. In all scenarios, however, changes in value of the economic measures were insufficient to affect the overall economic conclusion about of the project. All economic measures still indicated strong evidence for a net economic benefit from fertilization.

Finally, in order to examine whether my choice of prior probability distribution contributed to the large estimates of expected additional recruits that would result from hypothetical replications of this fertilization project, I performed the same analysis using much narrower priors. For each model, I set the upper and lower prior bounds of each

parameter to +1 SE and -1 SE of the best-fit value for that model (Table 4). The prior bounds for a given parameter were therefore different among models, unlike the baseline priors used in the initial calculations, which were the same for all models. Results of all performance measures using these new priors were less than 10% smaller than those calculated with the baseline priors for the DI, DIFI, and DDFI models (Table 2B, Fig. 3B). However, the DD model produced estimates of expected additional recruits that were 13% smaller than those calculated with the baseline priors when the 1987 brood year was considered fertilized, and 40% smaller than the baseline values when the 1987 brood year was considered unfertilized. Analogous changes were noted for benefit-cost ratio and NPV when using the DD model, with both indicators decreasing by 12% and 37% with the new priors, depending on the fertilization status of the 1987 brood year.

Discussion

Results indicate a strong probability that the Chilko Lake fertilization program increased productivity of the sockeye brood years affected by fertilization. Furthermore, this increase in productivity was sufficient to yield a substantial expected net economic benefit under all alternative models and scenarios. There was nonetheless a wide range of outcomes in both biological and economic performance measures, reflecting large uncertainty in the stock-recruitment parameters. This range of outcomes also depended on the model used in the analysis, the assumed fertilization status of the 1987 brood year, and to a lesser extent, the bounds placed on the prior probability distributions of the model parameters.

Differences among models

Density-independent vs. density-dependent models

The expected values of all performance measures depended on which model was assumed to reflect the Chilko Lake sockeye salmon situation. Specifically, the estimate of expected additional recruits that would be produced by repeated hypothetical fertilization experiments was substantially lower when using the DD model (Equation 4), which incorporated a density-dependent term in which the effect of fertilization varied with

steeper and more downward sloping, on average, in the DD model than the slope of that relationship without fertilization ($F = 0$). This means that, according to this model, the majority of hypothetical repeated fertilization experiments would produce a greater increase in $\log_e R/S$ at low spawner abundance than at high spawner abundance.

Although the results using the DD model make little ecological sense in terms of competition for limited resources, they can be easily explained by examining the stock-recruitment data shown in Figure 1. The fertilized 1990 and 1991 brood years represent the two greatest spawner abundances in this data set. Because there are no corresponding unfertilized brood years in this range of spawner abundance, these two data points exert a disproportionate leverage on parameter estimates for the DD model (Equation 4). When using this model, the negative slope of the stock-recruitment relationship with fertilization became steeper to fit to these data points, producing the results described above. The addition of data from unfertilized brood years at spawner abundances greater than 400,000 might reduce this effect, although the extent to which the results would reflect the hypothesized outcome (where the slope of the stock-recruitment relationship becomes flatter with fertilization) would depend on the specific data.

Despite observed reductions in biological and economic performance measures when the density-dependent term was added to the DI model, results from model comparisons using AIC_C indicated that there was, in fact, little difference in the overall fit of the DI and DD models. Apparently, both models account for a similar amount of variability in the stock-recruitment data, and are therefore equally appropriate representations of the information available. The inferences made using either of these models should thus carry equal weight in further analyses (Burnham and Anderson 1998). However, the fit of both the DI and DD models is relatively poor when compared to the

increased information gained by including the Fraser Index in the DIFI and DDFI models, as discussed in the following section. Accordingly, estimates of performance measures derived from the DIFI and DDFI models should thus receive greatest attention.

Fraser Index

Incorporating the Fraser Index into the DI model accounted for a substantial portion of the variability in Figure 1 that was shared with other Fraser River sockeye stocks, according to AIC_c results (DIFI, Table 3). However, this made little difference to estimates of the biological and economic performance measures, producing only a slight decrease in expected additional recruits (< 4%) when compared to the DI model without the index (for the baseline case where the 1987 brood year was considered fertilized) (Table 2A, Fig. 3A). Inclusion of the Fraser Index in Equation 5 caused the marginal distribution of the b parameter to shift toward lower values (Table 1A), resulting in a flatter line than observed with the DI model and reflecting reduced density dependence in the stock-recruitment relationship. Because of the particular values of Fraser Index residuals that occurred coincident with the fertilization project, analysis using the DIFI model produced fewer expected additional recruits for the 1991 and 1992 brood years and more expected additional recruits for the 1987, 1989 and 1990 brood years than occurred using the DI model, resulting in an overall decrease in expected additional recruits for the project.

Despite the observed reduction in expected additional recruits using the DIFI model, this model nonetheless produced a greater expected net economic benefit than the DI model, with the expected benefit-cost ratio and NPV each increasing by 4%. Although this seems counterintuitive, it can be explained by considering the fact that harvest rates were not constant in all years. This means that increasing the number of recruits in a

brood year subjected to relatively high harvest rates will yield a greater benefit, in terms of harvest, than increasing the number of recruits by the same amount in a brood year exposed to relatively low harvest rates. In this particular instance, the brood years which produced more expected additional recruits under the DI model than the DIFI model (1991 and 1992) were subjected to much lower harvest rates (56% and 52% respectively) than were the remaining three broods that produced more recruits under the DIFI model (1987, 76%; 1989, 80%; 1990, 82%).

Adding the Fraser Index to the DD model produced considerably different results from those described above for the DI model, with expected values for all performance measures increasing when the Fraser Index average residuals were removed from the Chilko stock-recruitment data (Equation 6) (expected additional recruits increased by 25%; NPV by 22%; benefit-cost ratio by 21%). This result occurred because the inclusion of the Fraser Index flattened out the slope of the stock-recruitment relationship with fertilization when compared with the DD model, as seen in a shift of the marginal distribution of the d parameter to lower values (T_v(hEe i)rr[2]ue

data, leaving a better estimate of the Chilko-specific stock-recruitment parameters, and of particular relevance to this analysis, providing a better estimate of the change in stock-recruitment parameters due to fertilization. Formal comparison of the four models used herein indicated that the Fraser Index did, in fact, improve parameter estimation, as indicated by the ΔAIC_C values in Table 3, and therefore the results generated from the two models incorporating this index should receive greater consideration when interpreting results than those that did not include the index. The results show that the DIFI model provides the best representation of the data, and that the DDFI model also merits further consideration, based on the small difference between its AIC_C value and the minimum value obtained among the models examined (according to Burnham and Anderson (1998), models with ΔAIC values < 2 have substantial support, and should be considered when making inferences about the data). Furthermore, the models that did not include the Fraser Index had sufficiently large ΔAIC_C scores ($\Delta AIC_C > 4$) that they should receive little consideration in the analysis (Burnham and Anderson 1998).

Implications of the differences among models

stock-recruitment data (from an experiment done on Chilko Lake in different years, or at a different lake), this range in outcomes may be large enough that the choice of model could affect whether an expected net benefit or loss is produced in the benefit-cost analysis.

Managers should therefore be aware of how various assumptions inherent in their models can affect the outcomes of their analyses. Managing according to one model, when in fact another model is a better representation of reality, can produce misleading results and incorrect management decisions. For example, using the DD model in a benefit-cost analysis when the DIFI model is actually the most biologically appropriate model would underestimate expected economic benefits, given the stock-recruitment data observed for Chilko Lake. It is therefore important that researchers carefully test the assumptions in their models, whenever the data are available to do this. In addition, it is recommended that any modeling exercise incorporate a formal model selection process, in which a group of well-considered, scientifically defensible candidate models are rigorously evaluated, according to well-established model selection criteria (see Burnham and Anderson (1998) for a review of the information-theoretic approach, and Draper (1995) for a review of Bayesian methods). Incorporating formal model selection will enable researchers and managers to determine which of several candidate model outcomes is most defensible, based on which model is best supported by the available data. At the very least, it is crucial that researchers explicitly state the assumptions inherent in their models, so that readers can properly interpret results.

This point is particularly relevant for the analysis of future lake fertilization projects. An interesting area for potential research could consider whether fertilization produces larger net benefits over some range of spawner abundance by examining the

economic benefits generated by the fertilization project, when it was considered fertilized. Based on this observation, the expected value of economic performance measures would be expected to drop by at least 25 – 40% when the contribution of the 1987 brood year was removed.

However, the 1987 brood year had an even greater influence on expected values of performance measures because the data point for this year lies on the upper edge of the scatter of stock-recruitment data, thereby exerting considerable influence on the posterior probabilities assigned to various θ_i . In general, when the 1987 brood year was considered unfertilized, the marginal distributions of the c and b parameters shifted to lower values, and the marginal distribution of the d parameter shifted to higher values (Table 1). For all models, this meant that the increase in $\log_e R/S$ was smaller and there were fewer expected additional recruits produced for the *remaining* fertilized brood years (i.e. 1989, 1990, 1991, and 1992) when the 1987 brood year was considered unfertilized.

There is biological evidence (Kyle 1994a) that food shortages for sockeye smolts occur during late summer, when zooplankton abundance begins to decrease due to predation. Accordingly, lake fertilization should provide the greatest benefit to smolts during this period, which is when the 1987 fertilization occurred. There is thus reason to believe that the abbreviated fertilization in 1987 may have been as effective as longer-duration fertilizations in following summers, and that analyses treating 1987 as fertilized provide a more realistic representation of the true state of nature.

Prior probability distributions

According to this study, the Chilko Lake fertilization project would be expected to produce from 1.1 to 6.1 million expected additional recruits, if the same fertilization

on assumptions of the fertilization status of the 1987 brood year. This represents an increase in expected recruits of between 37 and 110% from the number expected without fertilization, which is similar to results reported by LeBrasseur et al. (1978), who found an increase in recruits of approximately 100% due to fertilization. However, the economic benefits generated by the Chilko Lake fertilization project (from 6.9 to 28.1 for benefit-cost ratio, and from 7.4 to 33.8 million dollars for NPV) are substantially larger than those reported in the literature for other enhancement projects (Pearse 1994), and are considerably greater than the target benefit-cost ratio of 1.5:1 established by the Salmonid Enhancement Program (Hilborn and Winton 1993).

The discrepancy between the economic results of this analysis and those reported in the literature suggested that methodological biases could have contributed to the impressive numbers of expected returns generated in my analysis. In particular, previous studies have indicated that the choice of prior probabilities can have a significant effect on posterior distributions (Walters and Ludwig 1994; Adkison and Peterman 1996). I used uniform priors on all parameters in this analysis to ensure that the shape of the posterior distribution was determined primarily by the stock-recruitment data. However, research has shown that uniform priors can potentially contain considerable information, and can strongly influence the shape of the posterior, particularly when stock-recruitment data contain little information. Specifically, Hill and Pyper (1998) performed Bayesian forward simulations of stock-recruitment dynamics using uniform priors, and found that estimates of expected escapement after five generations were highly sensitive to the lower bound placed on the b parameter of the Ricker model (as defined in Eqn. 2). When using stock-recruitment data that contained little information at high spawner abundances, and wide uniform priors, the authors found that estimates of expected escapement generated

by Bayesian simulations were up to 60% greater than estimates generated by best-fit stochastic simulations. This is of particular relevance to this study, as Chilko Lake stock-recruitment data are also very limited at high spawner abundance. Such “missing” data can result in extreme parameter values (values at the limits of the prior probability distributions) being assigned a greater posterior probability of describing the stock-recruitment relationship than they would be the case if the data were more informative. This produces diffuse distributions for all parameters.

Based on these findings, I performed further analyses using much narrower prior probability distributions in order to assess how much influence the baseline priors had on the shape of the posterior, and hence on the estimated number of expected recruits. With the exception of one scenario, all performance measures showed only a slight decrease when narrow priors were used (Table 2B, Fig. 3B), suggesting that the use of a wide prior probability distribution had little influence on the shape of the posterior. Rather, it would appear that the scarcity of stock-recruitment data from unfertilized brood years at high spawner abundances was the most important factor contributing to the large estimates of expected additional recruits. This lack of contrast in the unfertilized data confounded the estimation of the stock-recruitment parameters, and created large uncertainty in estimates of the difference in $\log_e R/S$ between fertilized and unfertilized brood years. This effect was also evident when calculating benefits using best-fit estimates for model parameters (Table 5). For example, the estimated number of additional recruits produced using best-fit values was less than 19% smaller than expected values from Bayesian analysis using the baseline priors, and less than 16% smaller than expected values from the narrow priors for all but one trial (DD model, 1987 unfertilized) (Table 6).

Spawner abundances at Chilko Lake have been quite large in recent years, with estimates of effective female spawners exceeding 400,000 for 1996 to 1999 (Michael Bradford, personal communication). These new data from unfertilized brood years should provide sufficient contrast in the data at high spawner abundance to reduce the uncertainty in parameter estimates in future analyses. However, the process of refining these estimates is necessarily delayed because estimates of the number of adult recruits from these brood years will not be available for several years. Until then, it is recommended that estimates of economic benefits from the Chilko Lake fertilization project presented here be considered speculative.

Management implications

The cost-effectiveness of lake fertilization, in terms of adults produced, has

could be incurred from any project of this nature. In particular, I caution that the history of manipulating nutrient cycling by either supplementing or removing nutrient inputs has been demonstrated to cause major ecological changes in both terrestrial and aquatic ecosystems (Likens et al. 1977; Schindler et al. 1978). Furthermore, the practice of enhancing one stock for the sake of augmenting its harvests should be rigorously examined, because it may have indirect negative effects on smaller, threatened stocks. Increased harvesting effort directed at a fertilized run could potentially increase bycatch of less productive stocks, reducing the effectiveness of existing conservation efforts.

References

- Abelson, P. 1996. Project appraisal and valuation of the environment. St. Martin's Press Inc, New York.
- Adkison, M.D., and Peterman, R.M. 1996. Results of Bayesian methods depend on details of implementation: an example of estimating salmon escapement goals. *Fish. Res.* **25**: 155-70.
- Andersen, P. 1982. Commercial fisheries under price uncertainty. *J. Env. Econ. Manage.* **9**: 11-28.
- Anderson, D.M., Shankle, S.A, Scott, M.J., Neitzel, D.A., and Chatters, J.C. 1993. Valuing effects of climate change and fishery enhancement on chinook salmon. *Contemporary Policy Issues* **11**: 82-94.
- Anderson, E.E. 1986. Taxes vs. quotas for regulating fisheries under uncertainty: a hybrid discrete-time continuous-time model. *Mar. Res. Econ.* **3**: 183-207.
- Bockstael, N.E. and Opaluch, J.J. 1983. Discrete modelling of supply response under uncertainty: the case of the fishery. *J. Env. Econ. Manage.* **10**: 125-37.
- Box, G.E.P., and Tiao, G.C. 1973. Bayesian inference in statistical analysis. Addison-Wesley, Reading, Mass.
- Bradford, M.J., Pyper, B., and Shortreed, K.S. *in press*. Biological responses of sockeye salmon to the fertilization of Chilko Lake, a large lake in the interior of British Columbia. *N. Am. J. Fish. Manage.*
- Brent, R.J. 1996. Applied cost-benefit analysis. Edward Elgar Publishing Ltd. Cheltenham, U.K.
- Budy, P., Luecke, C., and Wurtsbaugh, W.A. 1998. Adding nutrients to enhance the growth of endangered sockeye salmon: trophic transfer in an oligotrophic lake. *Trans. Am. Fish. Soc.* **127**: 19-34.
- Burnham, K.P. and Anderson, D.R. 1998. Model selection and inference: a practical information-theoretic approach. Springer-Verlag Inc., New York.

Costello, C.J., Adams, R.M., and Polasky, S. 1998. The value of El Nino forecasts in the

Hanley, N. and Spash, C.L. 1993. Cost-benefit analysis and the environment. Edward Elgar Publishing, Ltd. Aldershot, England.

Henderson, M.A., and Cass, A.J. 1991. Effect of smolt size on smolt-to-adult survival for Chilko Lake sockeye salmon (*Oncorhynchus nerka*). Can. J. Fish. Aquat. Sci. **48**: 988-94.

Hilborn, R., and Winton, J. 1993. Learning to enhance salmon production: lessons from the Salmonid Enhancement Program. Can. J. Fish. Aquat. Sci. **50**: 2043-56.

Hill, R. A., and Pyper, B.J. 1998. Implications of a Bayesian approach for simulating salmon population dynamics. *In* Fishery stock assessment models. *Edited by* F. Funk et al. Alaska Sea Grant College Program Report No. AK-SG-98-01, University of Alaska Fairbanks.

Hume, M.B., Shortreed, K.S., and Morton, K.F. 1996. Juvenile sockeye rearing capacity of three lakes in the Fraser River system. Can. J. Fish. Aquat. Sci. **53**: 719-733.

Hurvich, C.M. and Tsai, C-L. 1989. Regression and time series model selection in small samples. Biometrika **76**: 297-307.

Hyatt, K.D., and Stockner, J.G. 1985. Responses of sockeye salmon (*Oncorhynchus nerka*) to fertilization of British Columbia coastal lakes. Can. J. Fish. Aquat. Sci. **42**: 320-31.

- LeBrasseur, R.J., McAllister, C.D., Barraclough, W.E., Kennedy, O.D., Manzer, J., Robinson, O., and Stephens, K. 1978. Enhancement of sockeye salmon (*Oncorhynchus nerka*) by lake fertilization in Great Central Lake: summary report. J. Fish. Res. Board Can. **35**: 1580-96.
- LeBrasseur, R.J., McAllister, C.D., and Parsons, T.R. 1979. Addition of nutrients to a lake leads to greatly increased catch of salmon. Env. Cons. **6**: 187-90.
- Likens, G.E, Bormann, F.H., Pierce, R.S, Eaton, J.S., and Johnson, N.M. 1977. Biogeochemistry of a forested ecosystem. Springer-Verlag Inc, New York.
- Luecke, C., Wurtsbaugh, W.A., Budy, P., Gross, H.P., and Steinhart, G. 1996. Simulated growth and production of endangered Snake River sockeye salmon: assessing management strategies for the nursery lakes. Fisheries **21**: 18-25.
- McAllister, M.K., Pikitch, E.K., Punt, A.E., and Hilborn, R. 1994. A Bayesian approach to stock assessment and harvest decisions using the sampling/importance resampling algorithm. Can. J. Fish. Aquat. Sci. **51**: 2673-87.
- Pearse, P.H. 1994. An assessment of the salmon stock development program on Canada's Pacific coast. Internal Audit and Evaluation Branch, Department of Fisheries and Oceans.
- Peterman, R.M. 1978. Testing for density-dependent marine survival in Pacific salmonids. J. Fish. Res. Board Can. **35**: 1434-50.
- Peterman, R.M. 1991. Density-dependent marine processes in North Pacific salmonids:

Raffiee, K., Luo Y., and Song, S. 1997. The economic cost of species preservation: the Northwestern Nevada Cui-ui. *Rev. Reg. Studies* **27**: 277-95.

Ready, R.C. 1995. Environmental valuation under uncertainty. *In* The handbook of environmental economics.

Table 1. Upper and lower bounds of baseline prior probability distributions for model parameters (Equations 3 through 6), and 95% credibility intervals of marginal posterior distributions of model parameters. Models were DI (Density-Independent); DIFI (Density-Independent + Fraser Index); DD (Density-Dependent); DDFI (Density-Dependent + Fraser Index). Part A is for the case where the 1987 brood year was assumed to be fertilized; Part B is where it was assumed unfertilized.

A) 1987 fertilized

Parameter	Model				
	DI	DIFI	DD	DDFI	
a	Prior bounds	1.9	1.9	1.9	1.9
		3.2	3.2	3.2	3.2
	Posterior	2.4	2.3	2.2	2.2
	95% intervals	3.0	2.9	2.9	2.8

B) 1987 unfertilized

Parameter	Model				
	DI	DIFI	DD	DDFI	
a	Prior bounds	1.9	1.9	1.9	1.9
		3.2	3.2	3.2	3.2
	Posterior	2.4	2.3	2.2	2.2
	95% intervals	3.0	2.9	2.9	2.8
b	Prior bounds	0	0	0	0
		6.0×10^{-6}	6.0×10^{-6}	6.0×10^{-6}	6.0×10^{-6}
	Posterior	1.2×10^{-6}	0.6×10^{-6}	0.3×10^{-6}	0.3×10^{-6}
	95% intervals	4.8×10^{-6}	3.7×10^{-6}	3.9×10^{-6}	3.5×10^{-6}
c	Prior bounds	-1.0	-1.0	-1.0	-1.0
		4.0	4.0	4.0	4.0
	Posterior	-0.3	-0.3	0.2	-0.2
	95% intervals	1.3	1.3	2.9	2.5
d	Prior bounds			-4.0×10^{-6}	-4.0×10^{-6}
				10×10^{-6}	10×10^{-6}
	Posterior			-0.2×10^{-6}	-1.3×10^{-6}
	95% intervals			7.3×10^{-6}	5.8×10^{-6}
	Prior bounds		-0.1		-0.1
			1.4		1.4

Table 2. Expected economic performance measures over the entire 5 years of Chilko Lake fertilization, using 10% discount rate. Models were DI (Density-Independent); DIFI (Density-Independent + Fraser Index); DD (Density-Dependent); DDFI (Density-Dependent + Fraser Index). For Part A the baseline prior probability distributions were used; for Part B the narrower (± 1 SE) priors were used.

A) baseline priors

Performance measure		Model			
		DI	DIFI	DD	DDFI
Expected benefit-cost ratio	1987 fertilized	27.1	28.1	21.1	25.6
	1987 unfertilized	15.0	16.7	6.9	13.5
	1987 fertilized	32.6	33.8	25.2	30.7

Table 3. Relative values of the modified Akaike's Information Criterion for the four models used in this analysis. The ΔAIC_c value is the difference between the AIC_c value for a given model, and the model with the lowest AIC_c value. The model with the smallest ΔAIC_c , in this case the DIFI model, is the model that best approximates the information in the stock-recruitment data. Models were DI (Density-Independent); DIFI (Density-Independent + Fraser Index); DD (Density-Dependent); DDFI (Density-Dependent + Fraser Index).

		Model			
		DI	DIFI	DD	DDFI
ΔAIC_c	1987 fertilized	7.48	0	5.67	0.92
	1987 unfertilized	8.10	0	6.03	0.75

Table 4. Upper and lower bounds of narrow (± 1 SE) prior probability distributions for

B) 1987 unfertilized

Parameter		Model			
		DI	DIFI	DD	DDFI
a	Prior bounds	2.5	2.4	2.4	2.3
		2.9	2.7	2.7	2.6
	Posterior 95% intervals	2.5	2.4	2.4	2.3
		2.9	2.7	2.7	2.6
b	Prior bounds	2.0×10^{-6}	1.3×10^{-6}	0.8×10^{-6}	0.6×10^{-6}
		3.0×10^{-6}	3.0×10^{-6}	2.8×10^{-6}	3.0×10^{-6}
	Posterior 95% intervals	2.2×10^{-6}	1.4×10^{-6}	0.9×10^{-6}	0.7×10^{-6}
		3.9×10^{-6}	2.9×10^{-6}	2.7×10^{-6}	2.7×10^{-6}

Table 5. Best-fit estimates of model parameters (a through e). Models were DI (Density-Independent); DIFI (Density-Independent + Fraser Index); DD (Density-Dependent); DDFI (Density-Dependent + Fraser Index).

Parameter		Model			
		DI	DIFI	DD	DDFI
a	1987 fertilized	2.71	2.58	2.55	2.50
	1987 unfertilized	2.69	2.57	2.54	2.58

Table 6. Estimates of expected additional recruits (in millions of fish) produced over the entire 5 years of Chilko Lake fertilization using the best-fit estimates of model parameters, and estimates of expected additional recruits that would result from hypothetical repeated experiments summed over the entire 5 years of Chilko Lake fertilization using baseline and narrow (+/- 1 SE) prior probability distributions for model parameters. Models were DI (Density-Independent); DIFI (Density-Independent + Fraser Index); DD (Density-Dependent); DDFI (Density-Dependent + Fraser Index).

(Expected) Additional Recruits (millions)		Model			
		DI	DIFI	DD	DDFI
Best-fit	1987 fertilized	5.8	5.4	3.3	4.4
	1987 unfertilized	3.2	3.2	0.4	2.1

Figure 1. Stock-recruitment data for Chilko Lake sockeye (1949 through 1992 brood years). Pre-fertilization brood years are indicated by black circles, fertilized brood years are indicated by open circles. The 1987 brood year is identified by an asterisk because it reared in only a partially fertilized lake. Numbers beside data points identify brood years, and numbers in parentheses indicate the value of that brood year's Fraser Index (that index was from Bradford et al., in press, see text).



Figure 2. Generalized flow chart of the procedure used to estimate the economic value of the Chilko Lake fertilization project.

Figure 3. Estimates of estimates of expected additional recruits that would result from hypothetical repeated experiments summed over the entire 5 years of the Chilko Lake fertilization project. Models were DI (Density-Independent); DIFI (Density-Independent + Fraser Index); DD (Density-Dependent); DDFI (Density-Dependent + Fraser Index) (see text and Equations 3-6 for further description). Due to the limited fertilization in 1988, solid bars indicate calculations where the 1987 brood year was considered fertilized, open bars indicate calculations where the 1987 brood year was considered unfertilized. Part A is from calculations using baseline parameters; Part B is from calculations using narrower (± 1 SE) prior probabilities on parameters.

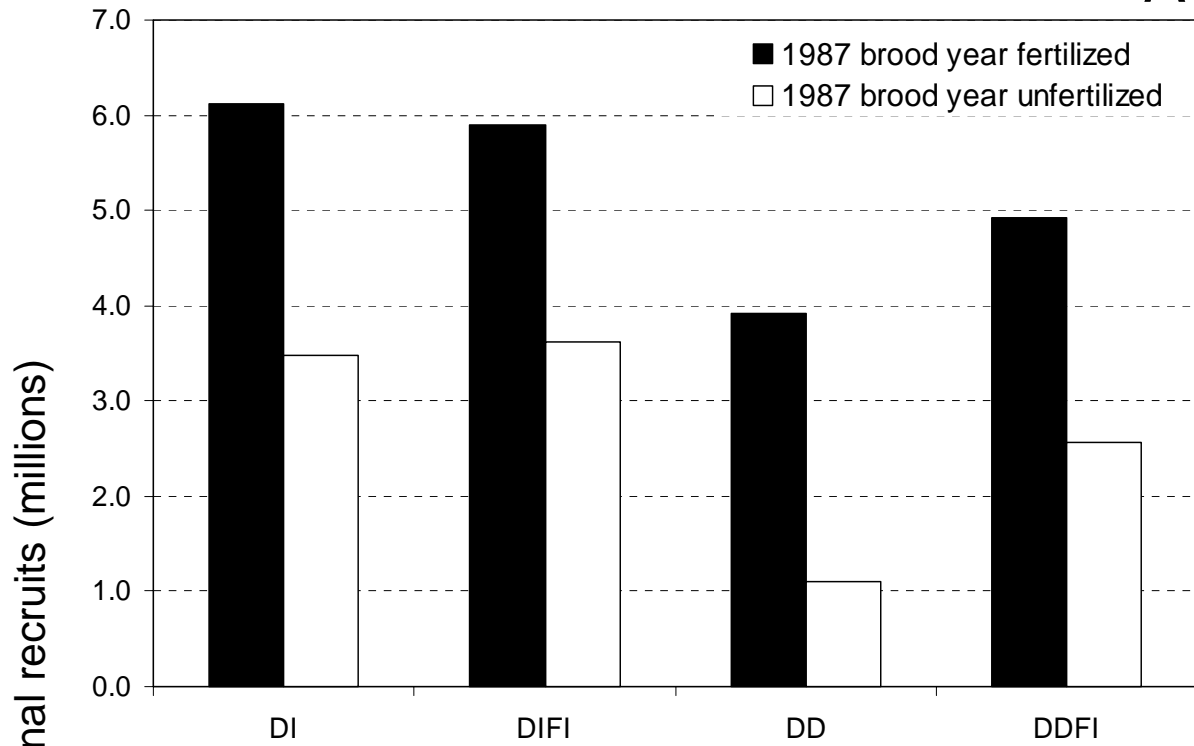
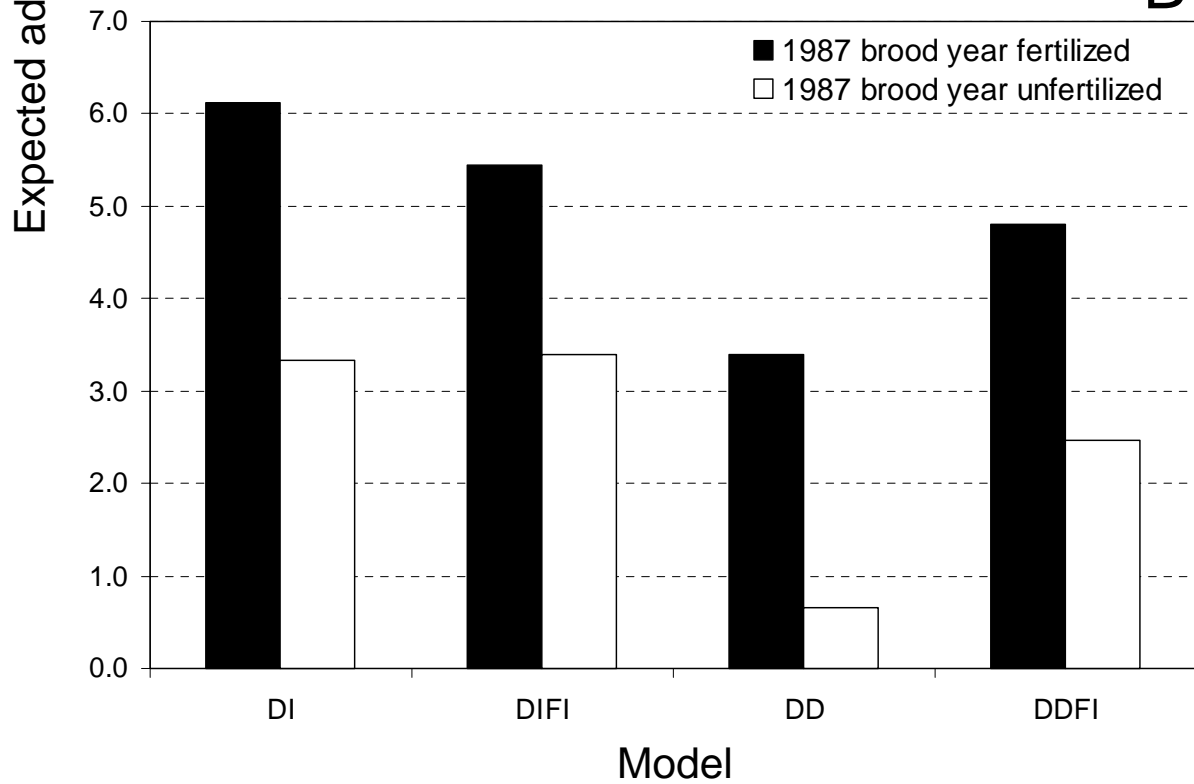
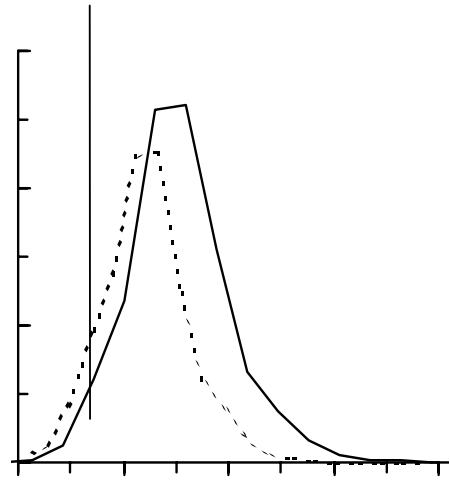
A**B**

Figure 4. Probability distributions of additional recruits that would result from hypothetical repeated experiments summed over the entire 5 years of the Chilko Lake fertilization project. Models were DI (Density-Independent); DIFI (Density-Independent + Fraser Index); DD (Density-Dependent); DDFI (Density-Dependent + Fraser Index). Solid lines indicate calculations where the 1987 brood year was considered fertilized, dotted lines indicate calculations where the 1987 brood year was considered unfertilized.



Vertical line on the left side of the graph.

Vertical line on the left side of the graph.

Vertical line on the right side of the graph.

Figure 5. Probability distributions of benefit-cost ratio that would result from hypothetical repeated experiments summed over the entire 5 years of the Chilko Lake fertilization project. Models were DI (Density-Independent); DIFI (Density-Independent + Fraser Index); DD (Density-Dependent); DDFI (Density-Dependent + Fraser Index). Solid lines indicate calculations where the 1987 brood year was considered fertilized, dotted lines indicate calculations where the 1987 brood year was considered unfertilized.

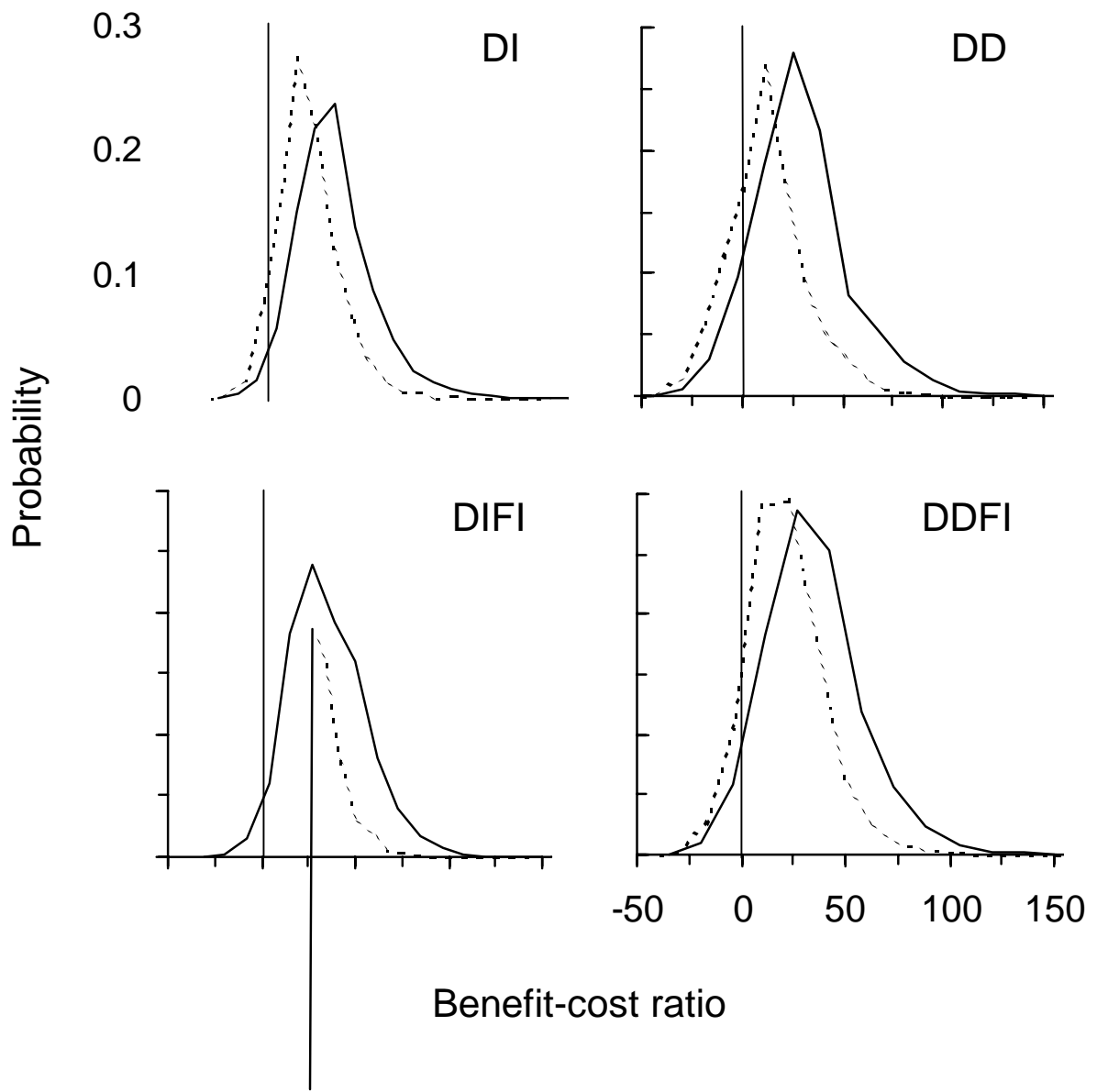
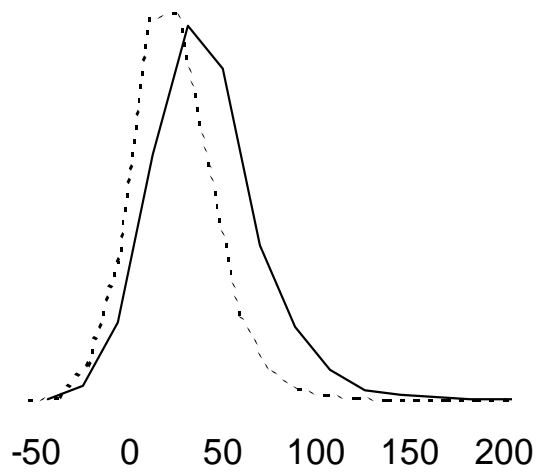
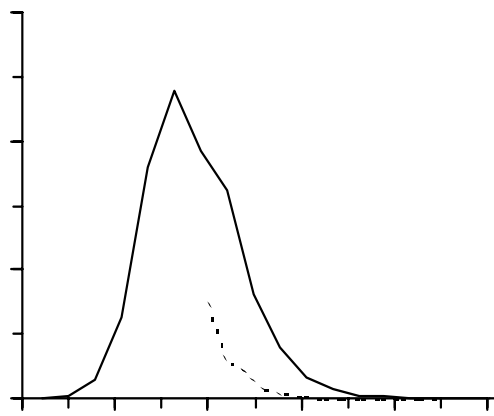
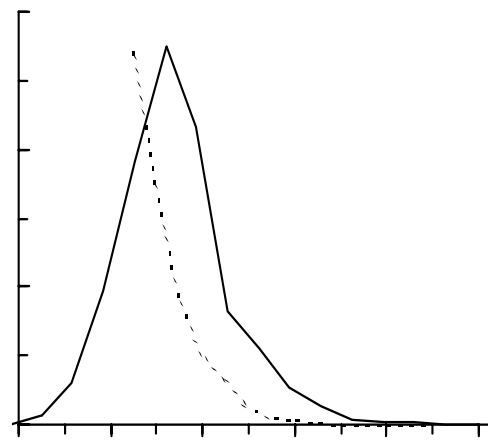
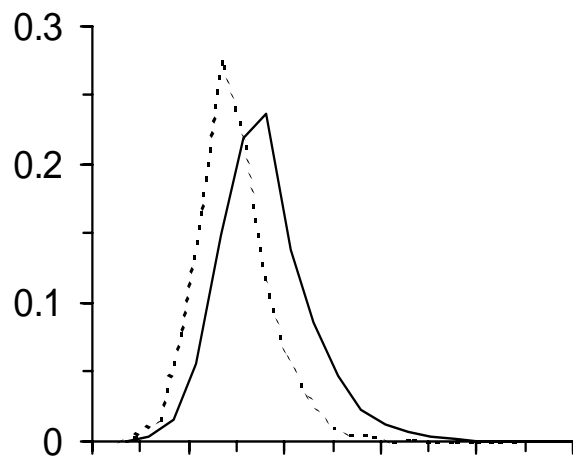


Figure 6. Probability distributions of net present value (NPV) that would result from hypothetical repeated experiments summed over the entire 5 years of the Chilko Lake fertilization project. Models were DI (Density-Independent); DIFI (Density-Independent + Fraser Index); DD (Density-Dependent); DDFI (Density-Dependent + Fraser Index). Solid lines indicate calculations where the 1987 brood year was considered fertilized, dotted lines indicate calculations where the 1987 brood year was considered unfertilized.



Appendix A

SIR Algorithm

The following sequence of steps (from Rubin 1988) was used in the SIR algorithm. (1) I selected an “importance function” to approximate the posterior. For simplicity, I used the joint prior probability distribution of the input parameters to represent this function. Prior probabilities have been used as importance functions in previous analyses (McAllister et al. 1994), and are a reasonable and efficient choice if the likelihood calculation provides reasonable weighting on a large portion of the joint prior distribution (Punt and Hilborn 1997). (2) A parameter set θ_i was randomly selected from the joint prior. (3) The model calculated the predicted $\log_e(R/S)$ using θ_i and also d_k , the difference between the predicted and observed $\log_e(R/S)$ for data point k . (4) d_k was then used to calculate the log-likelihood ($\log_e L_k$) of that data point, k , given that parameter set, θ_i , according to Equation 9. (5) Steps 3 and 4 were repeated for all data points k in the stock-recruitment data, D . (6) The joint likelihood of the entire data set ($L(D|\theta_i)$) was calculated according to Equation 10. (7) Steps 2 through 6 were repeated many times (between 60,000 and 400,000 times, depending on the model used). (8) The model calculated the importance ratio (or weight) of each θ_i by dividing the likelihood of the stock-recruitment data given that parameter set ($L(D|\theta_i)$) by the sum of all likelihoods across all parameter sets ($\Sigma L(D|\theta_i)$). (9) The parameter set with the greatest weight was then identified. If its weight was greater than 1%, I increased the number of samples in step 7 (Punt and Hilborn 1997) to ensure that the parameter space was sampled sufficiently to yield a reasonably smooth approximation of the posterior. (10) Then, using a binomial sampling algorithm, the model resampled randomly (with replacement) one θ_i from the set of previously sampled parameter sets ($\theta_1, \theta_2, \dots, \theta_m$). The probability of

resampling a particular θ_i was proportional to its weight, calculated in step 8, and the total number of resamples taken in this step was approximately $\frac{1}{4}$ of the samples taken in step 7. (11) The posterior probability for this parameter set given the data, $P(\theta_i|D)$, was then estimated by taking the ratio of the number of resamples drawn for that parameter set to the total number of resamples taken. (12) After calculating the posterior probability, the model calculated all performance measures (number of additional recruits, net present value, benefit-cost ratio) for θ_i . (13) Steps 10 to 12 were repeated until all resamples were taken.

Appendix B

Costs and benefits

Table 7. Direct costs of the Chilko Lake fertilization project (thousands of 1997 \$).

	Fertilizer costs	Base costs	Flying costs	Supply and services Canada
1988	45.59	109.14	31.14	0
1989	0	0	0	0
1990	138.16	76.12	168.38	15.11
1991	122.24	72.10	184.76	12.67
1992	112.59	92.98	152.76	0
1993	98.68	69.76	149.02	0

Table 8. Assumed net commercial benefits from the Chilko Lake fertilization project (1997 \$).

	Price per kg for sockeye
Net fishery	5.66
Troll fishery	5.13
First Nations fishery	4.54

Table 9. Components of net commercial benefits for net and troll fisheries (DFO 1996).

Harvesting net benefits	Processing net benefits
= <i>Vessel benefits</i>	

Appendix C

Canadian Consumer Price Index

Table 10. Canadian Consumer Price Index (CPI) for all economic sectors.

	CPI
1988	84.8
1989	89
1990	93.3
1991	98.5
1992	100
1993	101.8
1994	102
1995	104.2
1996	105.9
1997	107.6

