



---

## How to obtain more information

For information about this product or the wide range of services and data available from Statistics Canada, visit our website, [www.statcan.gc.ca](http://www.statcan.gc.ca).

You can also contact us by

email at [STATCAN.infostats-infostats.STATCAN@canada.ca](mailto:STATCAN.infostats-infostats.STATCAN@canada.ca)

telephone, from Monday to Friday, 8:30 a.m. to 4:30 p.m., at the following toll-free numbers:

- |   |                |
|---|----------------|
| • Statistical Information Service                             | 1-800-263-1136 |
| • National telecommunications device for the hearing impaired | 1-800-363-7629 |
| • Fax line  | 1-877-287-4369 |

Depository Services Program

- |                  |                |
|------------------|----------------|
| • Inquiries line | 1-800-635-7943 |
| • Fax line       | 1-800-565-7757 |

## Standards of service to the public

Statistics Canada is committed to serving its clients in a prompt, reliable and courteous manner. To this end, Statistics Canada has developed standards of service that its employees observe. To obtain a copy of these service standards, please contact Statistics Canada toll-free at 1-800-263-1136. The service standards are also published on [www.statcan.gc.ca](http://www.statcan.gc.ca) under "Contact us" > "Standards of service to the public."

## Note of appreciation

Canada owes the success of its statistical system to a long-standing partnership between Statistics Canada, the citizens of Canada, its businesses, governments and other institutions. Accurate and timely statistical information could not be produced without their continued co-operation and goodwill.

## Standard table symbols

The following symbols are used in Statistics Canada publications:

- not available for any reference period
- .. not available for a specific reference period
- ... not applicable
- 0 true zero or a value rounded to zero
- 0<sup>s</sup> value rounded to 0 (zero) where there is a meaningful distinction between true zero and the value that was rounded
- P preliminary
- r revised
- X suppressed to meet the confidentiality requirements of the Statistics Act
- E use with caution
- F too unreliable to be published
- \* significantly different from reference category ( $p < 0.05$ )

Published by authority of the Minister responsible for Statistics Canada

© Minister of Industry, 2016

All rights reserved. Use of this publication is governed by the Statistics Canada [Open Licence Agreement](#).

An [HTML version](#) is also available.

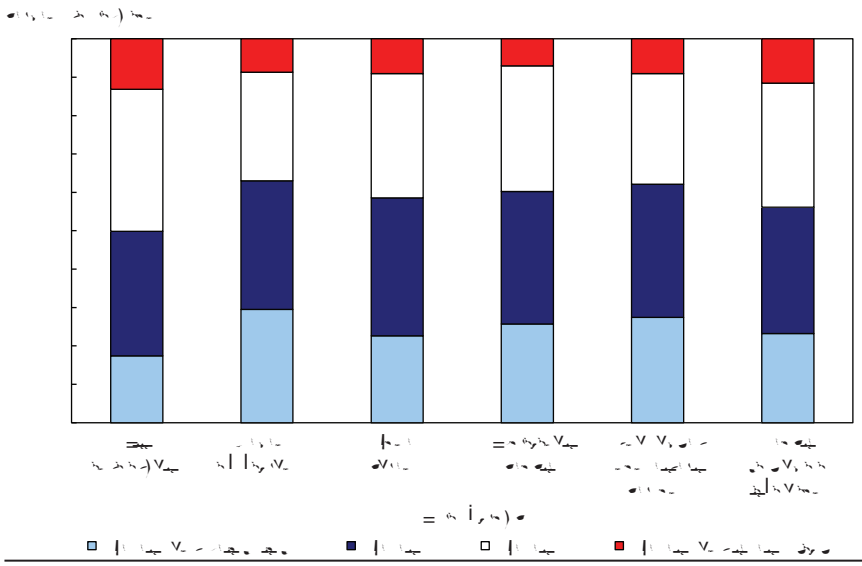
Produced by the Information Management and Reporting Division





# The association between skills and low income

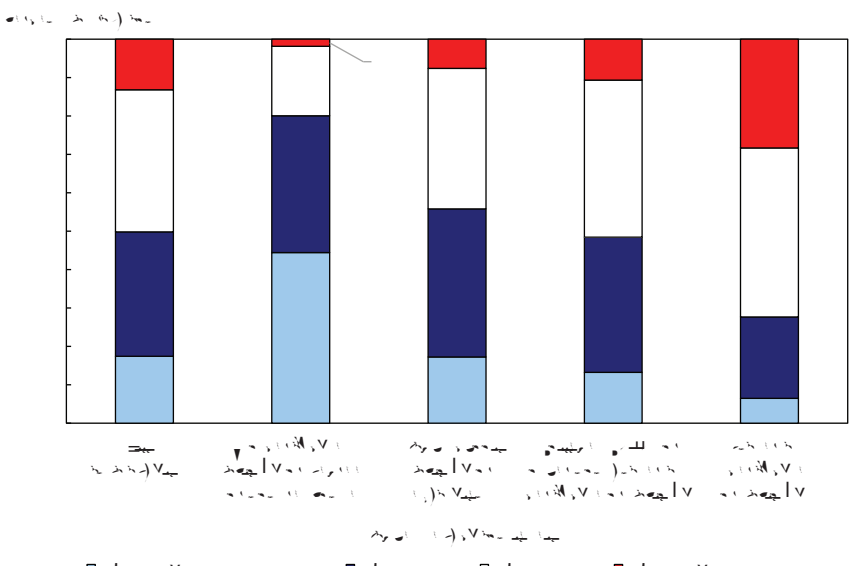
**Chart 1**  
PIAAC literacy level for groups at high risk of low income, 2012



The relationship between low income and skills after controlling for other factors

Note: ...  
Source: ...

**Chart 2**  
PIAAC literacy level for groups at high risk of low income, 2012



Note: ...  
Source: ...

## The association between skills and low income

**Table 2**  
**Percentage of individuals whose household income was below the after-tax**  
**Low Income Measure (LIM-AT), 2012**

	Percent of population	Percent below LIM (in 2011)
<b>PIAAC literacy level</b>		
Level 1	1.1	10.1
Level 2	1.1	10.1
Level 3	1.1	10.1
Level 4	1.1	10.1
Level 5	1.1	10.1
Level 6	1.1	10.1
<b>Highest education level</b>		
Less than high school	1.1	10.1
High school	1.1	10.1
Some college	1.1	10.1
College	1.1	10.1
University	1.1	10.1
<b>Immigrant</b>		
Not an immigrant	1.1	10.1
Immigrant	1.1	10.1
<b>Activity limitation</b>		
Not limited	1.1	10.1
Limited	1.1	10.1
<b>Family type</b>		
Married couple	1.1	10.1
Common-law couple	1.1	10.1
Single parent	1.1	10.1
Other	1.1	10.1
<b>Unattached non-elderly persons<sup>1</sup></b>		
Not unattached non-elderly persons	1.1	10.1
Unattached non-elderly persons	1.1	10.1
<b>Sex</b>		
Male	1.1	10.1
Female	1.1	10.1
<b>Age</b>		
15-24	1.1	10.1
25-34	1.1	10.1
35-44	1.1	10.1
45-54	1.1	10.1
55-64	1.1	10.1
65-74	1.1	10.1
75-84	1.1	10.1
85+	1.1	10.1
<b>Province</b>		
Alberta	1.1	10.1
British Columbia	1.1	10.1
Manitoba	1.1	10.1
Ontario	1.1	10.1
Quebec	1.1	10.1
Saskatchewan	1.1	10.1
Atlantic	1.1	10.1

**Source:** Statistics Canada, Survey of Adult Skills (PIAAC), 2012. Data are based on the 2012 PIAAC data. The LIM-AT is defined as the after-tax low income measure. The LIM-AT is defined as the after-tax low income measure. The LIM-AT is defined as the after-tax low income measure.

Conclusion

**Table 3**  
Regression models with low income as a dependant variable

	Regression model				
	Model 1	Model 2	Model 3	Model 4	Model 5
<b>PIAAC literacy level</b>					
PIAAC literacy level					i
PIAAC literacy level					i
PIAAC literacy level					i
PIAAC literacy level	i	i	i	i	i
<b>Highest education level</b>					
Highest education level	i				
Highest education level	i				
Highest education level	i				
Highest education level	i	i	i	i	i
<b>Immigrant</b>					
Immigrant	i	i			
Immigrant	i	i			
Immigrant	i	i	i	i	i
<b>Activity limitation</b>					
Activity limitation	i	i	i		
Activity limitation	i	i	i	i	i
<b>Family type</b>					
Family type					

---

Andrew Heisz

Jerry Situ

Geranda Notten

---

Data sources, methods and definitions

---

Data sources



## References