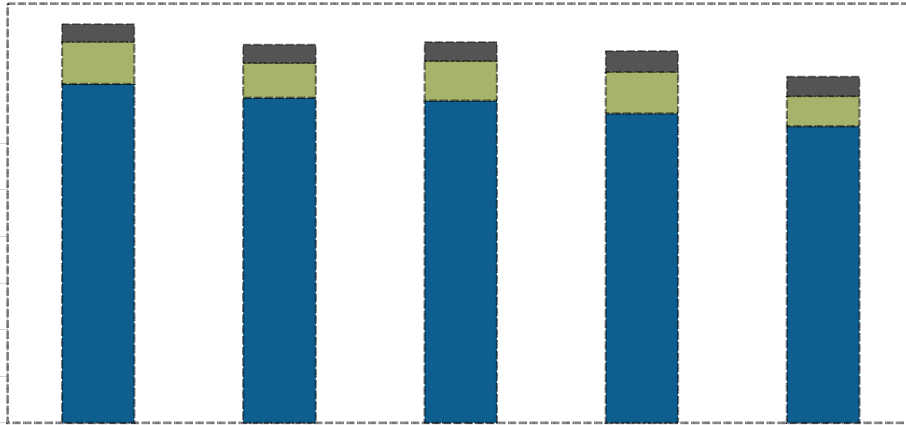


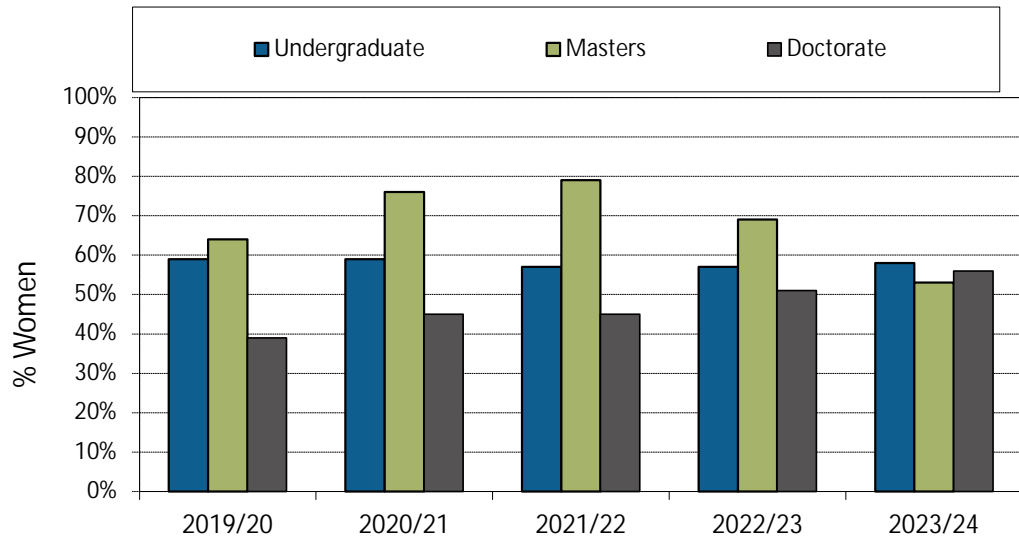
□ Graduate AFTE (excluding Co-op)  
■ Undergraduate AFTE (Co-op only) ■ Undergraduate AFTE (excluding Co-op)



**Academic Information Report - Department of Biomedical Physiology & Kinesiology**

3. Annualized Graduate Headcount

4. Gender Distribution (% Women)

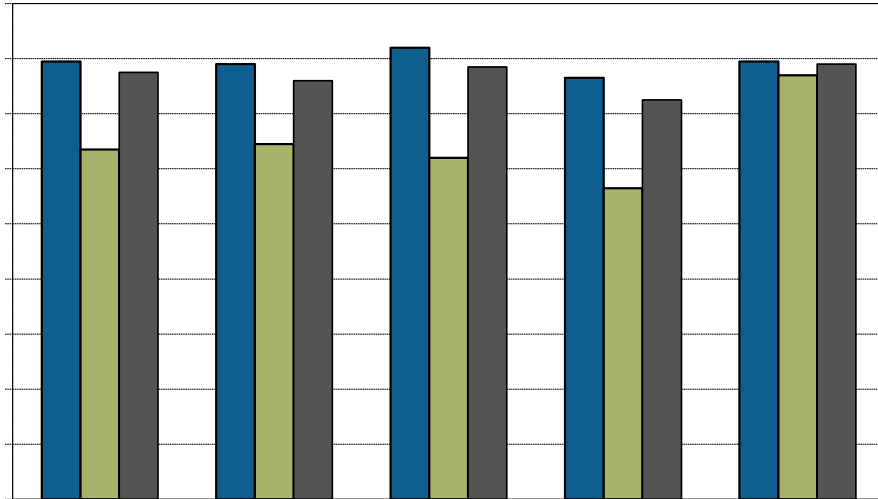




**Academic Information Report - Department of Biomedical Physiology & Kinesiology**

---

7. Time to SFU Bachelor Degree Completion



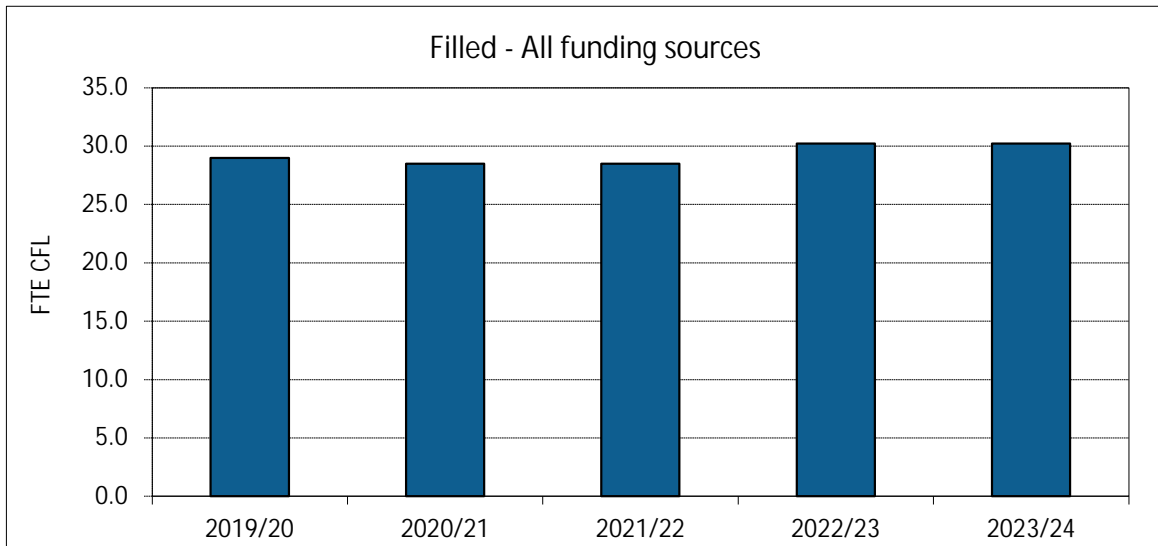
8. Time to Graduate Degree Completion

10 Jul 2024

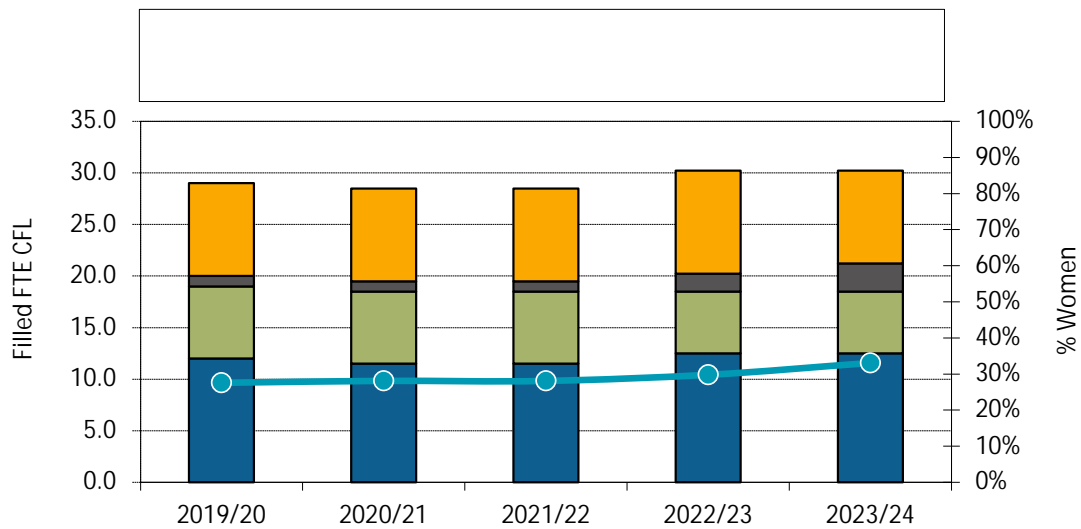


**Academic Information Report - Department of Biomedical Physiology & Kinesiology**

12. FTE Continuing Faculty Line (CFL)

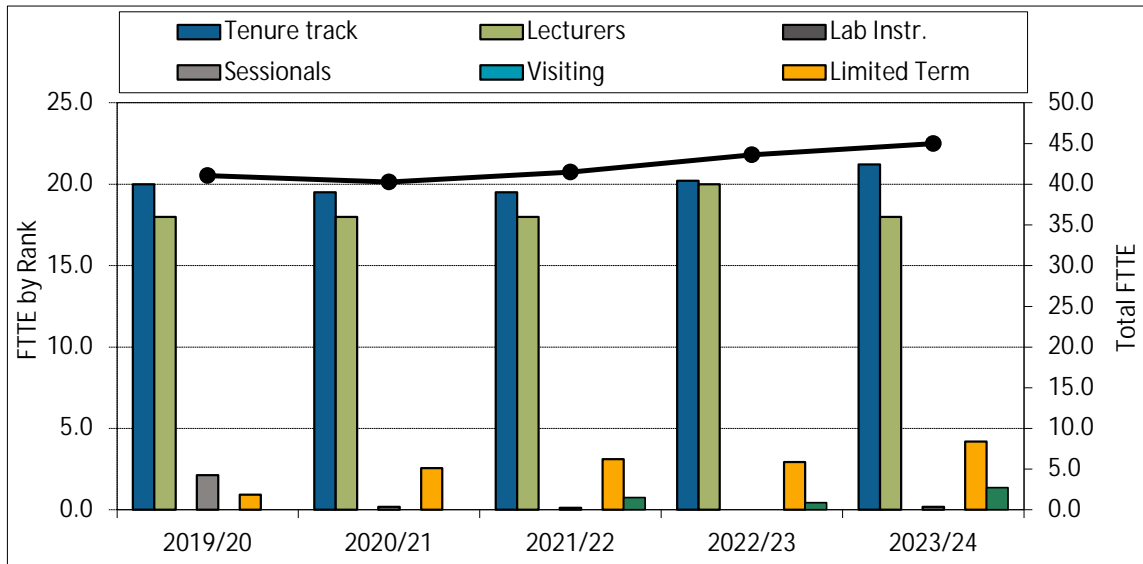


13. FTE CFL by Rank

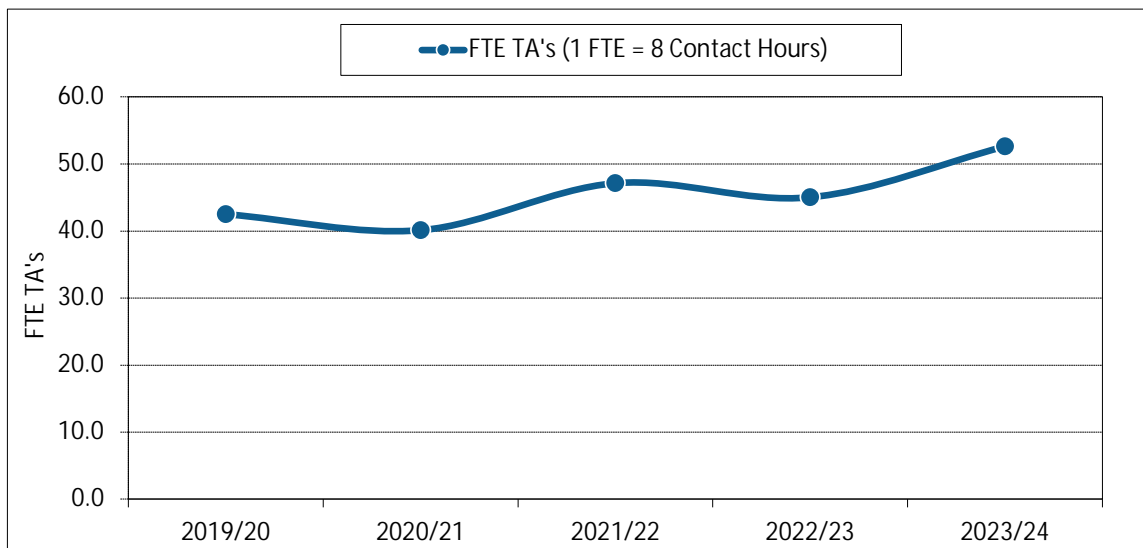


**Academic Information Report - Department of Biomedical Physiology & Kinesiology**

14. Full-Time Teaching Equivalent Resources



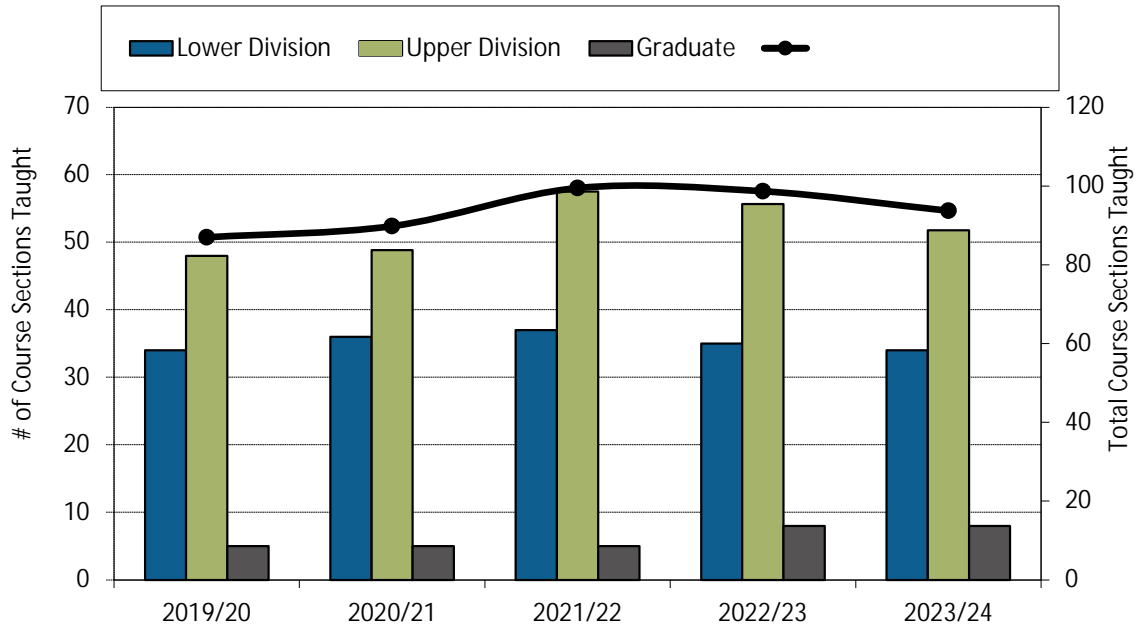
15. Teaching Assistants





**Academic Information Report - Department of Biomedical Physiology & Kinesiology**

16. Number of Course Sections Taught



17. % of Course Sections Taught by CFL

**Academic Information Report - Department of Biomedical Physiology & Kinesiology**

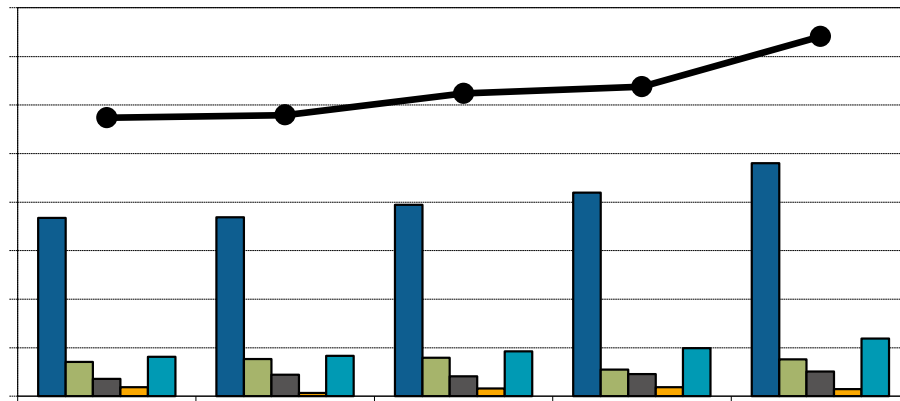
---

18. Average Class Size

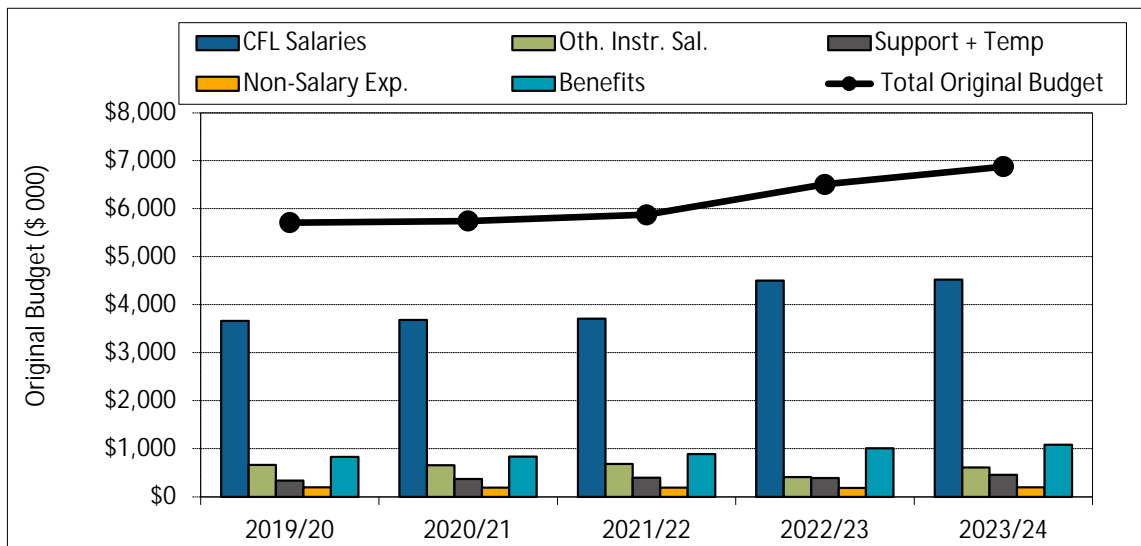
19. FTE Support Staff


**Academic Information Report - Department of Biomedical Physiology & Kinesiology**

20. BPK Academic Expenditures (\$ 000)



21. BPK Original Budget (\$ 000)



## Academic Information Report - Department of Biomedical Physiology & Kinesiology

22. BPK Research Grants and Contracts (\$ 000)

RATIOS:

**Academic Information Report - Department of Biomedical Physiology & Kinesiology**

Financial Ratios:

