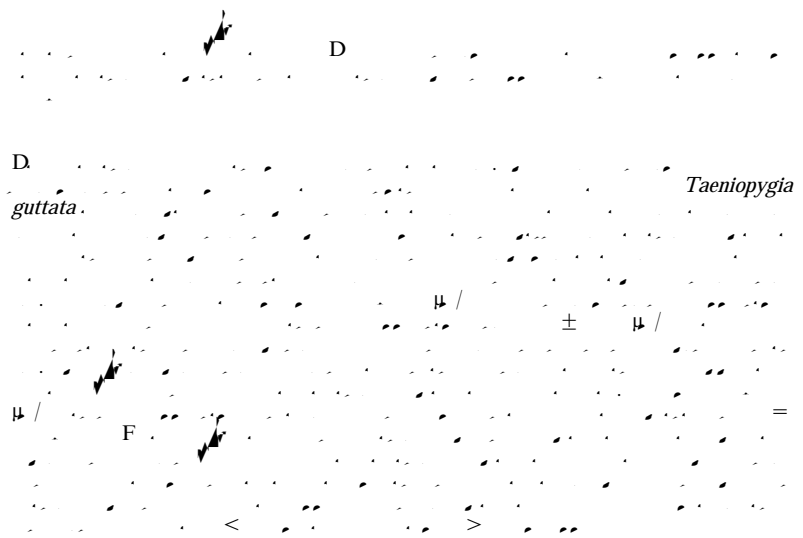


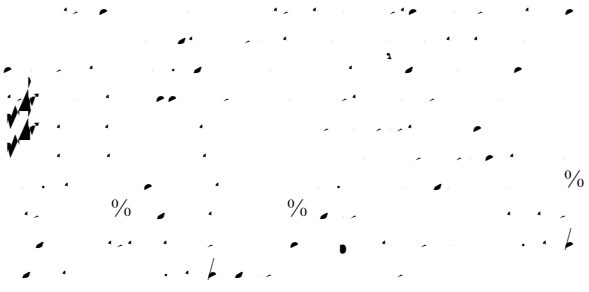
## Vitellogenin dynamics during egg-laying: daily variation, repeatability and relationship with egg size

Katrina G. Salvante and Tony D. Williams

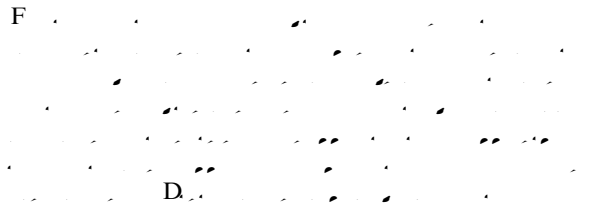


*K G Salvante correspondence and T D Williams Department of Biological Sciences Simon Fraser University University Drive Burnaby British Columbia Canada V A S E mail kgsalvan@sfu.ca*

*Taeniopygia guttata*

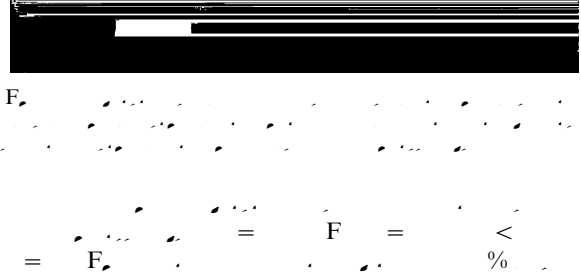
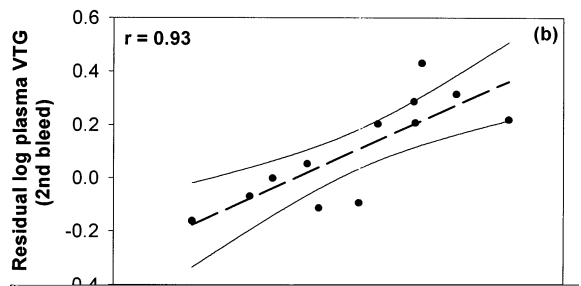
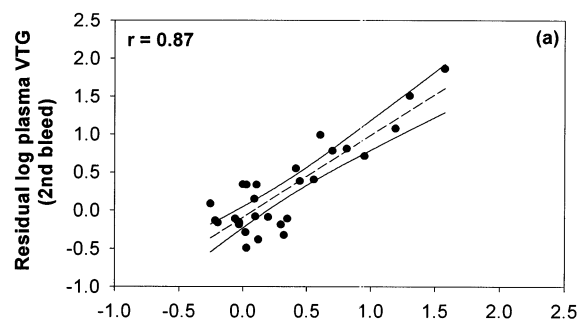
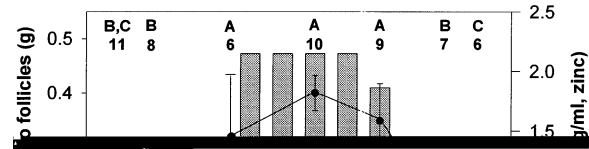
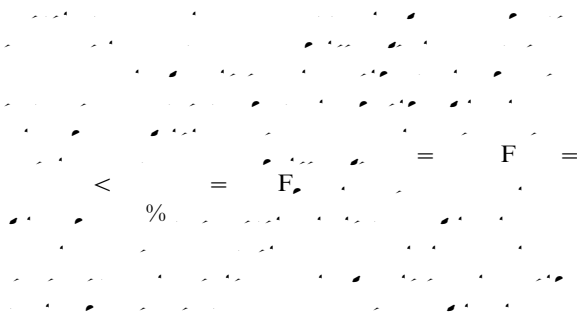


**Variation in plasma VTG in relation to reproductive effort**

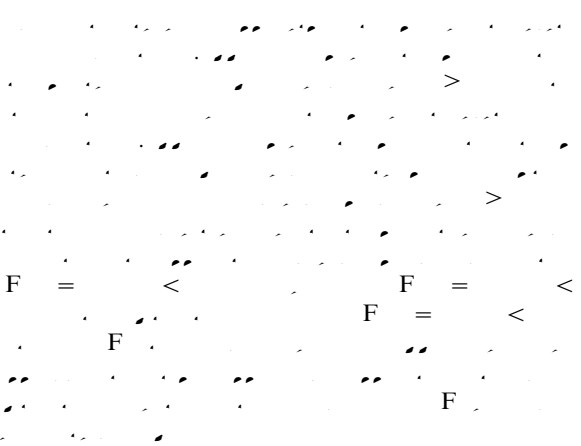




**Repeatability of VTG**



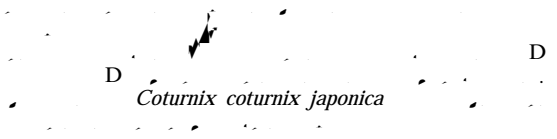
**Plasma VTG at the 1-egg stage and reproductive effort**











D

*Coturnix coturnix japonica*

D